

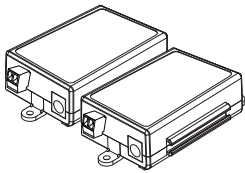
# Quick Start Guide

## ETP-01T / ETP-01R

Please read carefully the instruction manual before use. Contents of this manual are subject to change without prior notice for reasons such as functionality enhancements.

Rev.4.1

### Package

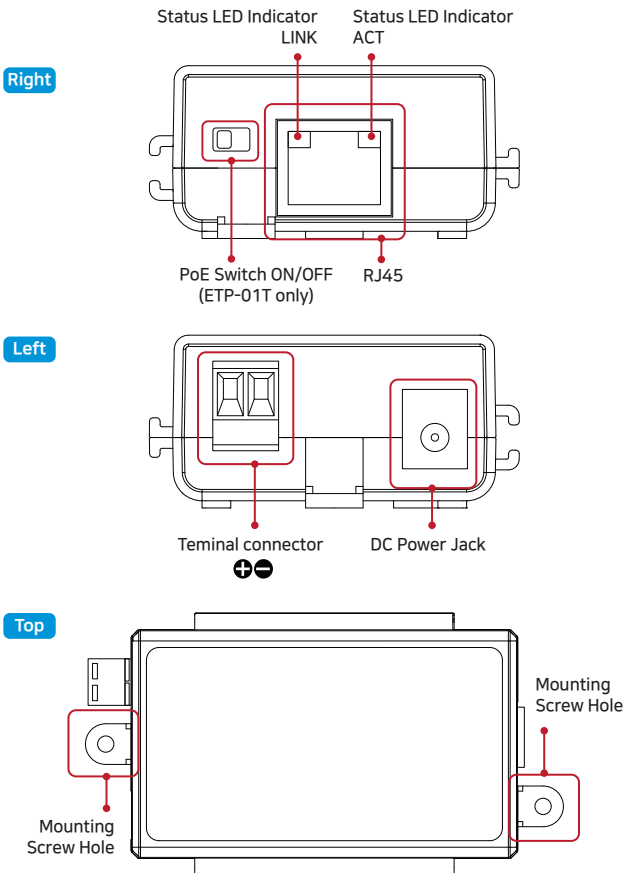


ETP-01T (Transmitter)  
ETP-01R (Receiver)



Quick Start Guide

### Hardware Overview



### LED Indicators

Indicator	Color	Function
LINK	Orange	Ethernet Data Act
ACT	Green	Ethernet Connect Act

### Overview

ETP-01 Series are High-Speed, long distance Ethernet & PoE extender that makes possible to transmit the Ethernet signal and PoE up to 300m through single pair of twisted wires.

It is cost-effective and time saving solution to migrate existing analog system to IP based system since ETP-01 series support easy installation utilizing the existing UTP bundle cables or any single twisted pair cables.

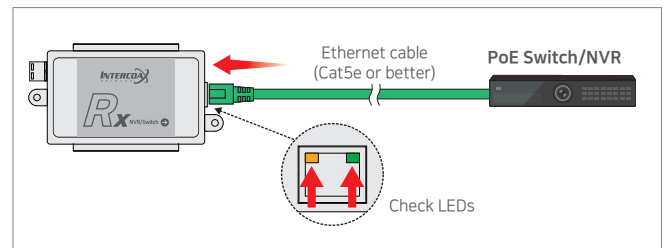
With long distance transmission feature, the device makes to overcome 100 meters distance limitation easily and reduces the construction cost significantly compared with fiber optic configuration.

### Features

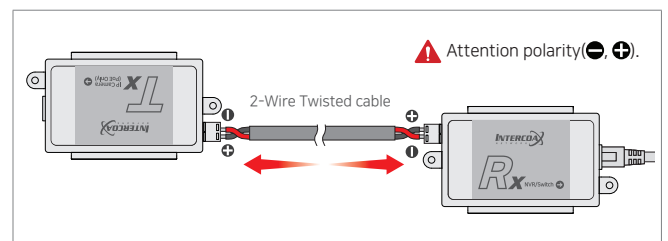
- Long reach Ethernet & PoE extension over existing 2-Wire twisted cable
- Data + Power over twisted cable
- Data and PoE distance up to 300 m
- 100Mbps Full Duplex
- PoE, PoE+, Extra PoE (Max. 60W PoE output, ETP-01T model only with DC Power adapter)
- LED Indication (Data, Power)
- Plug & Play
- Surge Protection
- Support PoE, PoE+ Input (25.5W) from PoE Switch / PoE NVR (ETP-01R model only)
- Slim design

### Installation Guide

1. Connect Ethernet cable (Cat5e or better) from PoE Switch/NVR to ETP-01R. Check LEDs on ETP-01R.

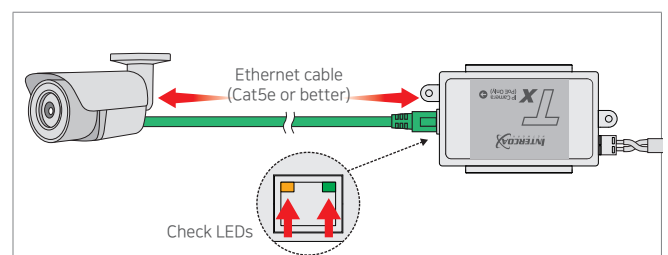


2. Connect single twisted pair cable to ETP-01R. Connect single twisted pair cable from ETP-01R to ETP-01T.



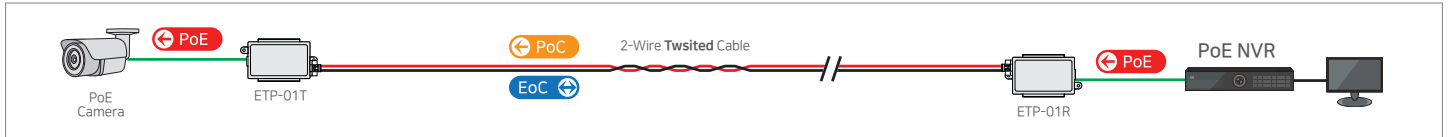
3. Connect Ethernet cable (Cat5e or better) from ETP-01T to IP Camera. Check LEDs on ETP-01T.

➔ Set ETP-01T, PoE Switch ON to supply direct power to IP camera. Set ETP-01T, PoE Switch OFF to connect PC or network switch devices.

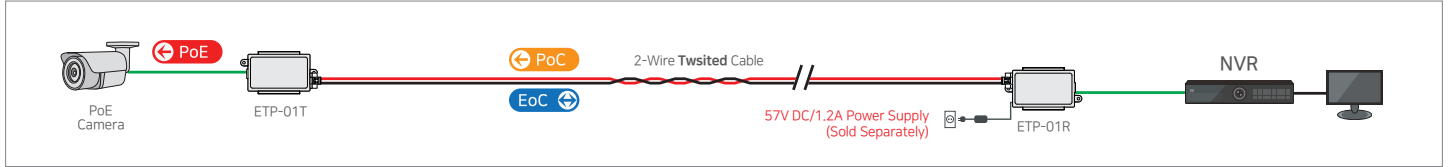


## Applications

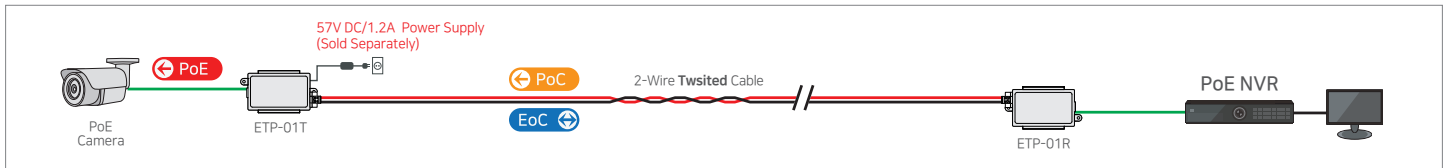
[Simply IP and PoE over 2-Wire]



[High Power over 2-Wire]



[Extra PoE (60W) over 2-Wire]



## Specification

Model		ETP-01T	ETP-01R
Interface	2-Wire	1 x 2-Pin Terminal Block-Ethernet over 2-Wire cable	
	Ethernet	1 x RJ45 - 10/100 Base-T	
Transmission Rate		Max. 100Mbps between Intercoax devices	
Transmission Distance	Data	Up to 300m (1 Pair Twisted and Solid Cable)	
	PoE (PoC)	Up to 300m (1 Pair Twisted and Solid Cable)	
LED Indication	Ethernet	1 x Link (Yellow) / 1 x ACT (Green)	
Power	Input	ETP-01R or DC48V~57V	PoE Switch/NVR (Max. 25W) or DC48V~57V (Max. 70W)
	PoE Output	IEEE802.3af (PoE), IEEE802.3at (PoE+), Extra PoE up to 60W with 57V Power Adaptor	PoE Not Supported PoC Only
Mechanical	Dimension	93(L) x 51(W) x 24(H)mm	
	Weight	52 g	
Environment	Operating Temp	-20 ~ 60°C	
	Storage Temp	-30 ~ 80°C	
	Relative Humidity	10% ~ 90%	
Compliance	Certification	FCC, CE, KC, RoHS	
	Surge Protection	IEC 61000-4-5 4kV(1.2 / 50us), 2kA(8 / 20us)	
Optional Accessories		57VDC / 1.2A External Power Supply	

## Caution

- Please install the device following the installation guide.
- Do not touch the device and cable with wet hands.
- Keep away from moisture and shock.
- Do not install near any heat sources such as radiators, heat registers, stoves or other apparatus that produce heat.
- Indoor use only. (Use waterproof junction box when it is used in outdoor)
- Do not use for other purposes.
- Do not disassemble or modify this device.
- Do not put any sticker or paint on it.
- If this device is defective or malfunctioning, please unplug the power source immediately and contact dealer or service center.
- Please use the rated power supply for the product.
- Connect DC power to this device first and then to AC outlet when using DC power supply.

## Warranty

- This device has passed the quality control and product inspection.
- Please install and use according to the installation guide.
- The warranty period for this product is 24 months from the date of purchase.
- If this device is defective or malfunctioning, please unplug the power adapter immediately and contact dealer or service center.
- Any damages or breakage from user's abuse, accident, modification or natural disasters will not be covered manufacturer's warranty.



Please visit below website for more detailed information.  
 Web: <http://www.intercoax.com> Tel: +82. 31. 365. 3133~4  
 E-mail: [info@intercoax.com](mailto:info@intercoax.com) Fax: +82. 31. 365. 3135

This device complies with part 15 of the fcc rules. Operation is subject to the following two conditions :  
 (1) This device may not cause harmful interference, and  
 (2) This device must accept any interference received including interference that may cause undesired operation