

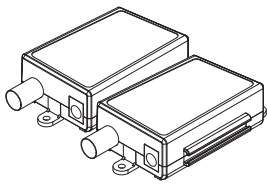
# Quick Start Guide

## ECP-01T / ECP-01R

Please read carefully the instruction manual before use. Contents of this manual are subject to change without prior notice for reasons such as functionality enhancements.

Rev.7.0

### Package



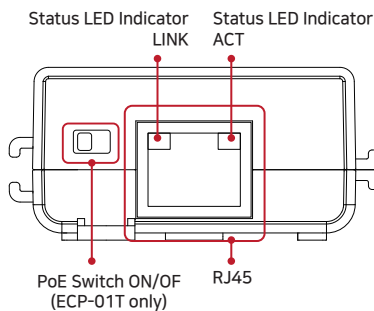
ECP-01T (Transmitter)  
ECP-01R (Receiver)



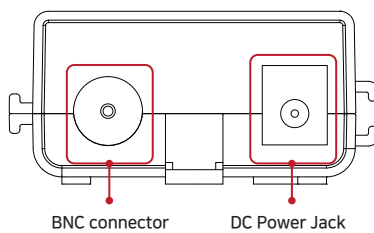
Quick Start Guide

### Hardware Overview

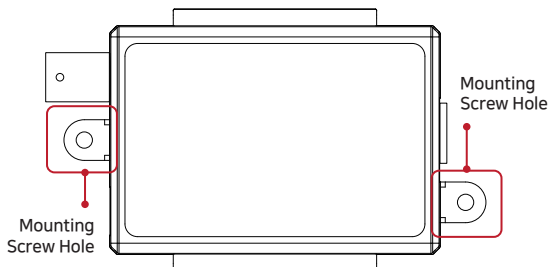
Right



Left



Top



### LED Indicators

| Indicator | Color  | Function             |
|-----------|--------|----------------------|
| LINK      | Orange | Ethernet Data Act    |
| ACT       | Green  | Ethernet Connect Act |

### Overview

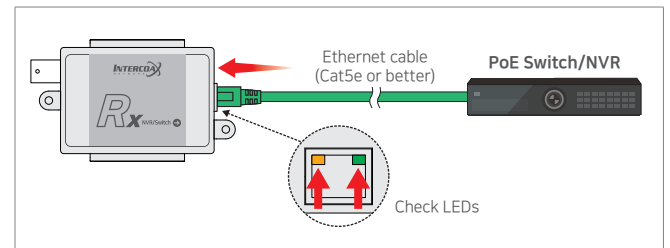
ECP-01 Series are High-Speed, long distance Ethernet & PoE extender that makes possible to transmit the Ethernet signal and PoE up to 400m through coaxial cables in different situations. It is cost-effective and time saving solution to migrate existing analog system to IP based system since ECP-01 series support easy installation utilizing the existing coaxial cable. With long distance transmission feature, the device makes to overcome 100 meters distance limitation easily and reduces the construction cost significantly compared with fiber optic configuration.

### Features

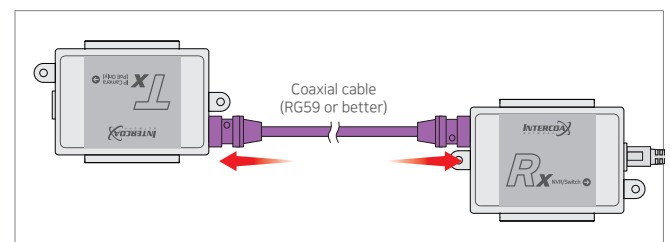
- Long reach Ethernet & PoE extension over existing coaxial cable
- Data + Power over coaxial cable
- Data distance up to 1000 m
- 100Mbps Full Duplex
- PoE, PoE+, Extra PoE (Max. 60W PoE output, ECP-01T model only with DC Power adapter)
- LED Indication (Data, Power)
- Plug & Play
- Support PoE, PoE+ Input (25.5W) from PoE Switch / PoE NVR (ECP-01R model only)
- Slim design

### Installation Guide

1. Connect Ethernet cable (Cat5e or better) from PoE Switch/NVR to ECP-01R. Check LEDs on ECP-01R.

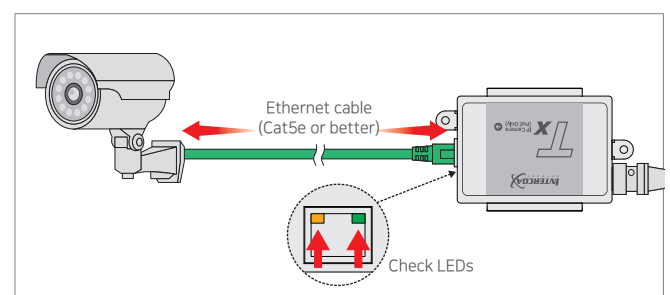


2. Connect coaxial cable (RG59 or better) to ECP-01R. Connect coaxial cable from ECP-01R to ECP-01T.



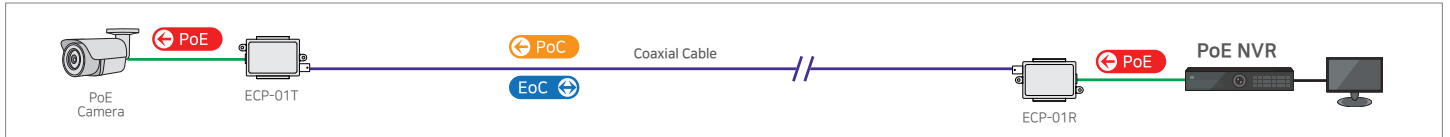
3. Connect Ethernet cable (Cat5e or better) from ECP-01T to IP Camera (PoE Model Only). Check LEDs on ECP-01T.

➔ Set ECP-01T, PoE Switch ON to supply direct power to IP camera. Set ECP-01T, PoE Switch OFF to connect PC or network switch devices.

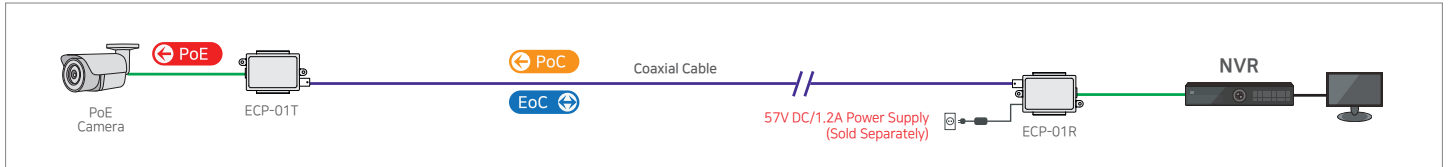


## Applications

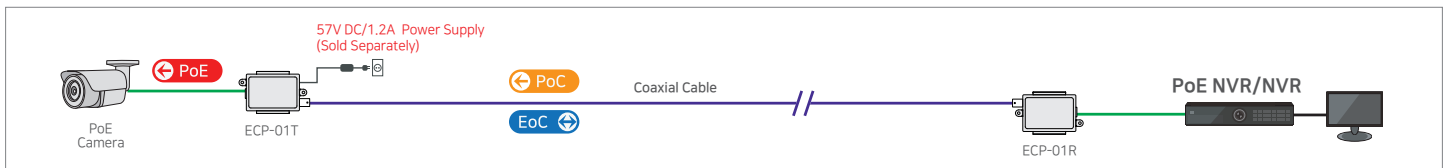
[Simply IP and PoE over Coax]



[High Power over Coax]



[Extra PoE (60W) over Coax]



## Specification

| Model                 |                   | ECP-01T  | ECP-01R  |
|-----------------------|-------------------|--|--|
| Interface             | Coax              | 1 x 75Ω BNC (Female)<br>- Ethernet over Coax   |  |
|                       | Ethernet          | 1 x RJ45 - 10/100 Base-T   |  |
| Transmission Rate     |                   | Max. 100Mbps between Intercoax devices   |  |
| Transmission Distance | Data              | up to 400 m when 100Mbps is used<br>up to 1000 m when 10Mbps is used<br>(5C-HFBT, RG-59 or better) |  |
|                       | PoE (PoC)         | Up to 400meter (RG59, RG6, 5C, 3C)   |  |
| LED Indication        | Ethernet          | 1 x Link (Yellow) / 1 x ACT (Green)  |  |
| Power                 | Input             | ECP-01R or<br>DC48V~57V  | PoE Switch/NVR<br>(Max. 25W) or<br>DC48V~57V<br>(Max. 70W) |
|                       | PoE Output        | IEEE802.3af (PoE),<br>IEEE802.3at (PoE+),<br>Extra PoE up to 60W<br>with 57V Power Adaptor         | PoE Not Supported<br>PoC Only                              |
| Mechanical            | Dimension         | 83(L) x 51(W) x 24(H)mm  |  |
|                       | Weight            | 52g  |  |
| Environment           | Operating Temp    | -20 ~ 60°C   |  |
|                       | Storage Temp      | -30 ~ 80°C   |  |
|                       | Relative Humidity | 10% ~ 90%  |  |
| Compliance            | Certification     | FCC, CE, KC, RoHS  |  |
|                       | Surge Protection  | IEC 61000-4-5 4kV(1.2 / 50us), 2kA(8 / 20us)   |  |
| Optional Accessories  |                   | 57VDC / 1.2A External Power Supply   |  |

## Caution

- Please install the device following the installation guide.
- Do not touch the device and cable with wet hands.
- Keep away from moisture and shock.
- Do not install near any heat sources such as radiators, heat registers, stoves or other apparatus that produce heat.
- Indoor use only. (Use waterproof junction box when it is used in outdoor)
- Do not use for other purposes.
- Do not disassemble or modify this device.
- Do not put any sticker or paint on it.
- If this device is defective or malfunctioning, please unplug the power source immediately and contact dealer or service center.
- Please use the rated power supply for the product.
- Connect DC power to this device first and then to AC outlet.

## Warranty

- This device has passed the quality control and product inspection.
- Please install and use according to the installation guide.
- The warranty period for this product is 24 months from the date of purchase.
- If this device is defective or malfunctioning, please unplug the power adapter immediately and contact dealer or service center.
- Any damages or breakage from user's abuse, accident, modification or natural disasters will not be covered manufacturer's warranty.



**INTERCOAX**  
NETWORK

Please visit below website for more detailed information.

Web: <http://www.intercoax.com> Tel: +82. 31. 365. 3133~4

**Intercoax Co., Ltd.**

E-mail: [info@intercoax.com](mailto:info@intercoax.com) Fax: +82. 31. 365. 3135

This device complies with part 15 of the fcc rules. Operation is subject to the following two conditions :

- (1) This device may not cause harmful interference, and
- (2) This device must accept any interference received including interference that may cause undesired operation